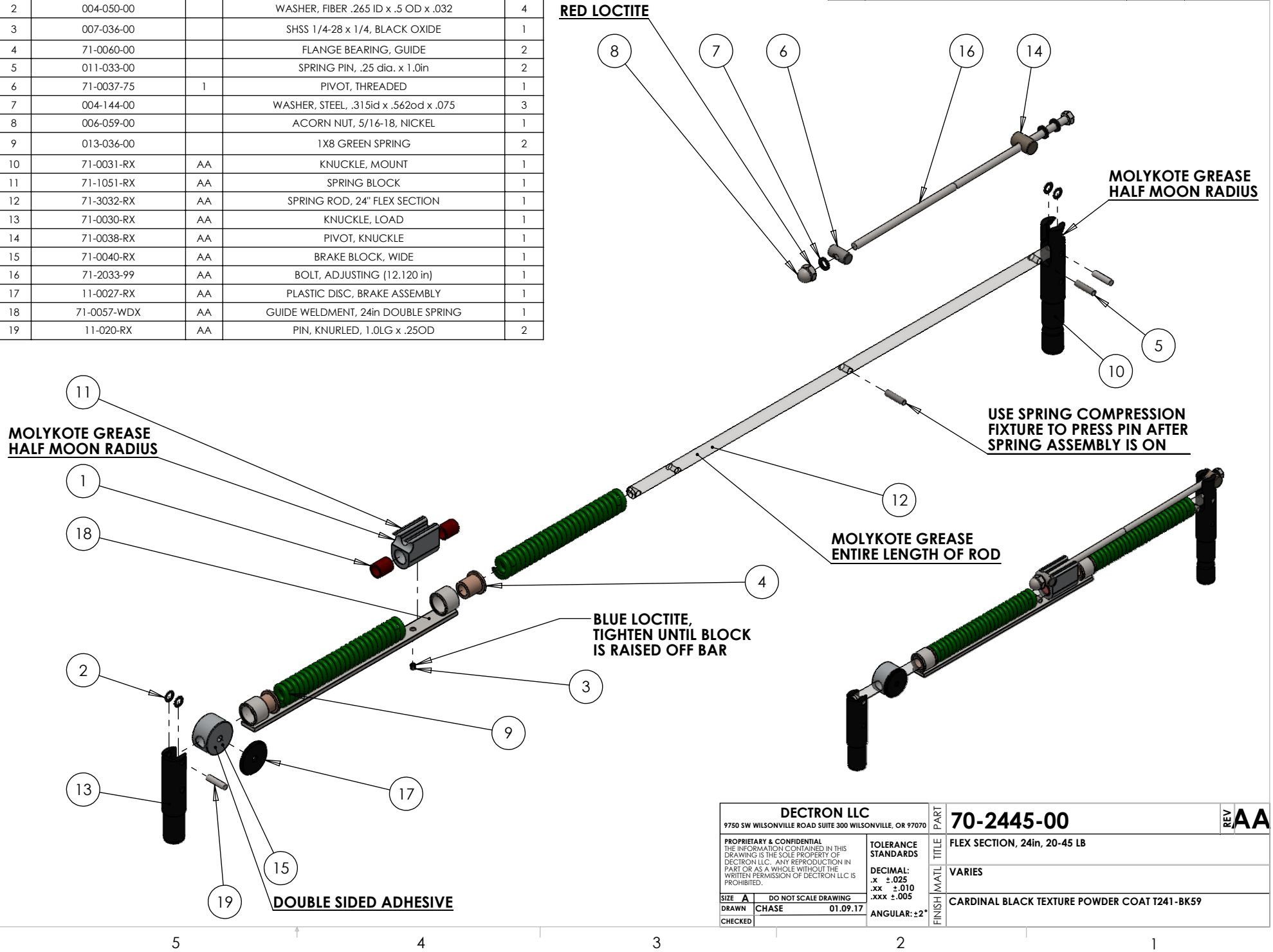


NO	PART#	REV	NAME	QTY.
1	016-070-00		SLEEVE BEARING, PLASTIC .5 ID x .75 OD	2
2	004-050-00		WASHER, FIBER .265 ID x .5 OD x .032	4
3	007-036-00		SHSS 1/4-28 x 1/4, BLACK OXIDE	1
4	71-0060-00		FLANGE BEARING, GUIDE	2
5	011-033-00		SPRING PIN, .25 dia. x 1.0in	2
6	71-0037-75	1	PIVOT, THREADED	1
7	004-144-00		WASHER, STEEL, .315id x .562od x .075	3
8	006-059-00		ACORN NUT, 5/16-18, NICKEL	1
9	013-036-00		1X8 GREEN SPRING	2
10	71-0031-RX	AA	KNUCKLE, MOUNT	1
11	71-1051-RX	AA	SPRING BLOCK	1
12	71-3032-RX	AA	SPRING ROD, 24" FLEX SECTION	1
13	71-0030-RX	AA	KNUCKLE, LOAD	1
14	71-0038-RX	AA	PIVOT, KNUCKLE	1
15	71-0040-RX	AA	BRAKE BLOCK, WIDE	1
16	71-2033-99	AA	BOLT, ADJUSTING (12.120 in)	1
17	11-0027-RX	AA	PLASTIC DISC, BRAKE ASSEMBLY	1
18	71-0057-WDX	AA	GUIDE WELDMENT, 24in DOUBLE SPRING	1
19	11-020-RX	AA	PIN, KNURLED, 1.0LG x .25OD	2

REVISIONS			
REV.	DESCRIPTION	DATE	APPROVED
AA	Added Revision Table / Revision Standardization	6/17/2025	DMS



<b>DECTRON LLC</b> 9750 SW WILSONVILLE ROAD SUITE 300 WILSONVILLE, OR 97070		<b>70-2445-00</b>	<b>REV AA</b>
<small>PROPRIETARY &amp; CONFIDENTIAL          THE INFORMATION CONTAINED IN THIS DRAWING IS THE SOLE PROPERTY OF DECTRON LLC. ANY REPRODUCTION IN PART OR AS A WHOLE WITHOUT THE WRITTEN PERMISSION OF DECTRON LLC IS PROHIBITED.</small>		<b>FLEX SECTION, 24in, 20-45 LB</b>	
<b>TOLERANCE STANDARDS</b> DECIMAL: .x ±.025 .xx ±.010 .xxx ±.005		<b>VARIES</b>	
SIZE <b>A</b> DRAWN <b>CHASE</b> CHECKED	DO NOT SCALE DRAWING 01.09.17	<b>CARDINAL BLACK TEXTURE POWDER COAT T241-BK59</b>	