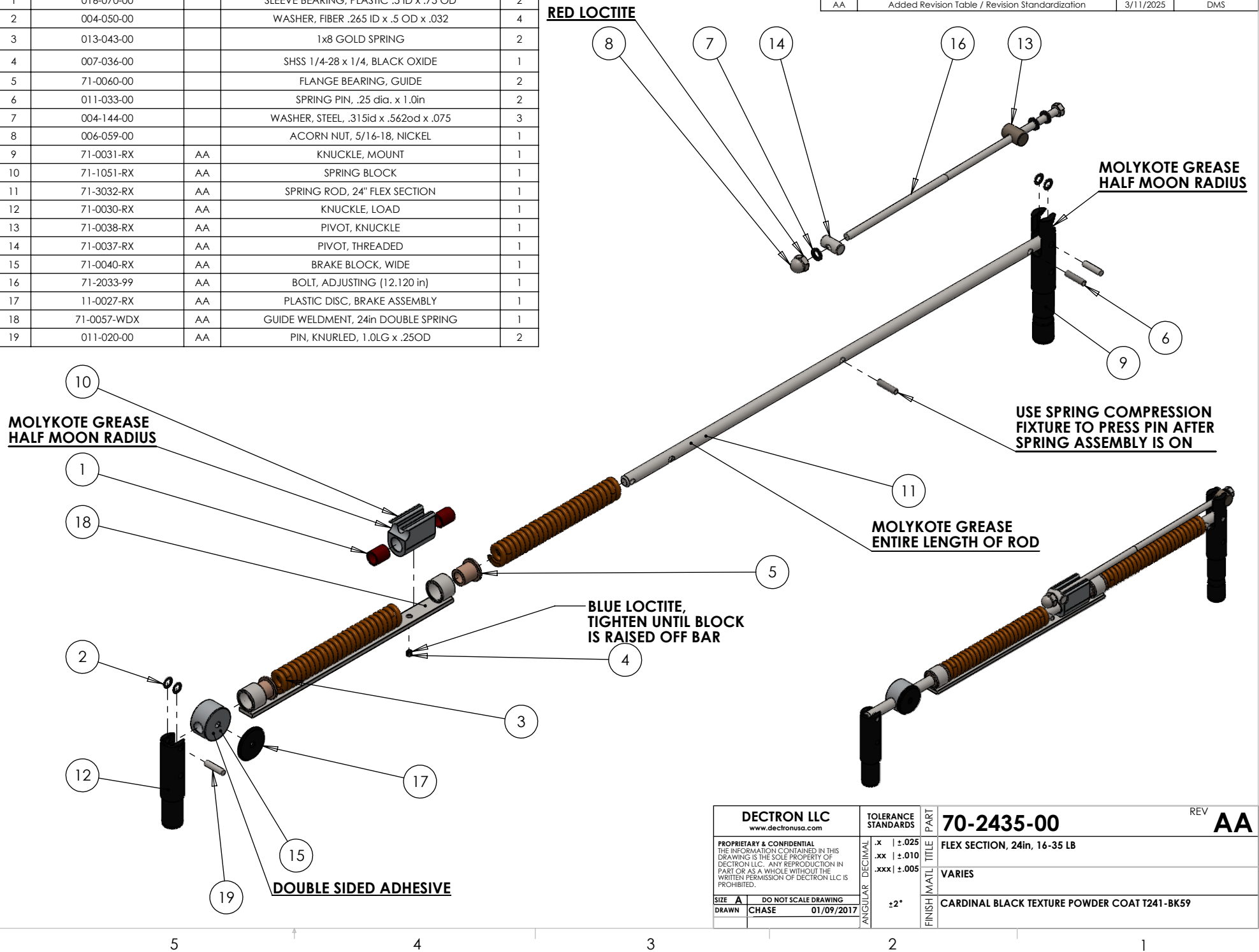


NO	PART#	REV	NAME	QTY.
1	016-070-00		SLEEVE BEARING, PLASTIC .5 ID x .75 OD	2
2	004-050-00		WASHER, FIBER .265 ID x .5 OD x .032	4
3	013-043-00		1x8 GOLD SPRING	2
4	007-036-00		SHSS 1/4-28 x 1/4, BLACK OXIDE	1
5	71-0060-00		FLANGE BEARING, GUIDE	2
6	011-033-00		SPRING PIN, .25 dia. x 1.0in	2
7	004-144-00		WASHER, STEEL, .315id x .562od x .075	3
8	006-059-00		ACORN NUT, 5/16-18, NICKEL	1
9	71-0031-RX	AA	KNUCKLE, MOUNT	1
10	71-1051-RX	AA	SPRING BLOCK	1
11	71-3032-RX	AA	SPRING ROD, 24" FLEX SECTION	1
12	71-0030-RX	AA	KNUCKLE, LOAD	1
13	71-0038-RX	AA	PIVOT, KNUCKLE	1
14	71-0037-RX	AA	PIVOT, THREADED	1
15	71-0040-RX	AA	BRAKE BLOCK, WIDE	1
16	71-2033-99	AA	BOLT, ADJUSTING (12.120 in)	1
17	11-0027-RX	AA	PLASTIC DISC, BRAKE ASSEMBLY	1
18	71-0057-WDX	AA	GUIDE WELDMNT, 24in DOUBLE SPRING	1
19	011-020-00	AA	PIN, KNURLED, 1.0LG x .25OD	2

REVISIONS			
REV.	DESCRIPTION	DATE	APPROVED
AA	Added Revision Table / Revision Standardization	3/11/2025	DMS



<b>DECTRON LLC</b> www.dectronusa.com		<b>TOLERANCE STANDARDS</b>	<b>PART</b>	<b>REV</b>
<small>PROPRIETARY &amp; CONFIDENTIAL THE INFORMATION CONTAINED IN THIS DRAWING IS THE SOLE PROPERTY OF DECTRON LLC. ANY REPRODUCTION IN PART OR AS A WHOLE WITHOUT THE WRITTEN PERMISSION OF DECTRON LLC IS PROHIBITED.</small>		.x   ±.025 .xx   ±.010 .xxx   ±.005	<b>70-2435-00</b>	<b>AA</b>
<b>SIZE</b>	<b>DO NOT SCALE DRAWING</b>	<b>ANGULAR</b>	<b>TITLE</b>	
<b>DRAWN</b>	<b>CHASE</b>	±2°	<b>FLEX SECTION, 24in, 16-35 LB</b>	
	01/09/2017		<b>VARIES</b>	
			<b>CARDINAL BLACK TEXTURE POWDER COAT T241-BK59</b>	