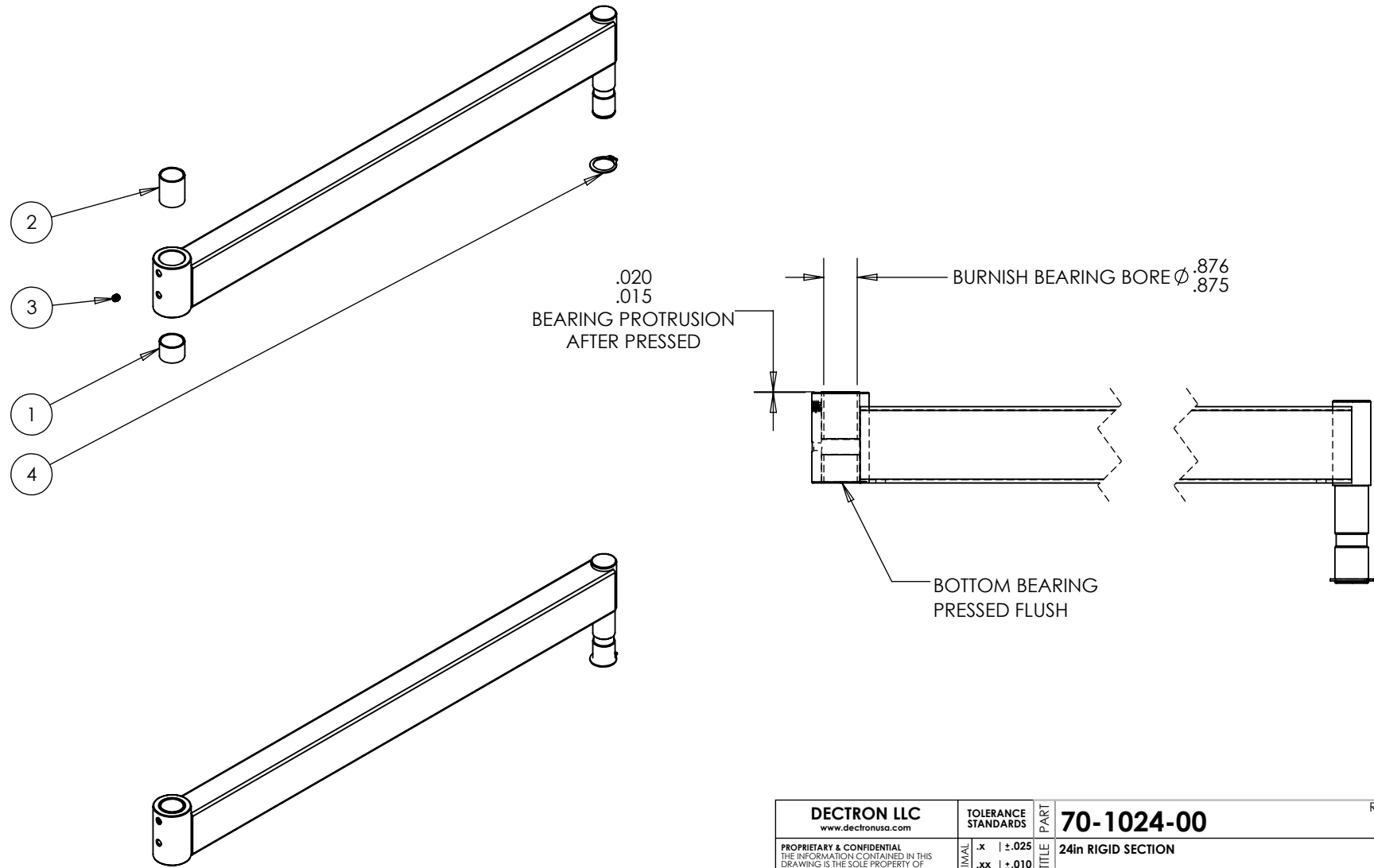


NO	PART#	REV	NAME	QTY.	SHIP W/ KIT
1	016-007-00		OILITE PLUS BEARING, .875 ID x 1.0 OD x 0.75	1	
2	016-008-00		OILITE PLUS BEARING, .875 ID x 1.0 OD x 1.25	1	
3	007-036-00		SHSS 1/4-28 x 1/4, BLACK OXIDE	1	
4	010-012-00		EXTERNAL RETAINING RING, 7/8" SHAFT	1	X

REVISIONS			
REV	DESCRIPTION	DATE	APPROVED
1	changed paint to powder coat	06/03/14	stro
2	add 2nd drain hole, 1.25" bearing housing to 1.5" for lever lock	05/19/15	stro
AA	Part# and Revision Change	1/7/2025	DMS

- ASSEMBLY NOTES:
- INSERT SET SCREW (3) BUT DO NOT TIGHTEN AGAINST BEARING



<b>DECTRON LLC</b> www.dectronusa.com		TOLERANCE STANDARDS .x   ±.025 .xx   ±.010 .xxx   ±.005	PART <b>70-1024-00</b>	REV <b>AA</b>
<small>PROPRIETARY &amp; CONFIDENTIAL  THE INFORMATION CONTAINED IN THIS DRAWING IS THE SOLE PROPERTY OF DECTRON LLC. ANY REPRODUCTION IN PART OR AS A WHOLE WITHOUT THE WRITTEN PERMISSION OF DECTRON LLC IS PROHIBITED.</small>		ANGULAR ±2°	TITLE 24in RIGID SECTION	
SIZE A	DO NOT SCALE DRAWING CHASE 05.12.25		MATERIAL STEEL	
			FINISH CARDINAL BLACK TEXTURE POWDER COAT T241-BK59	