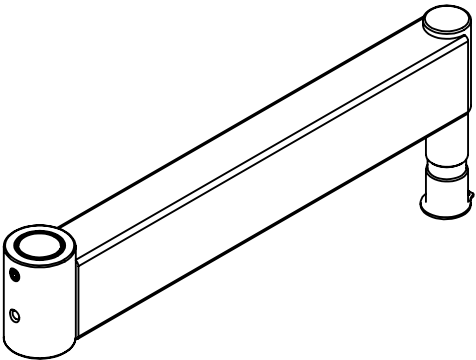
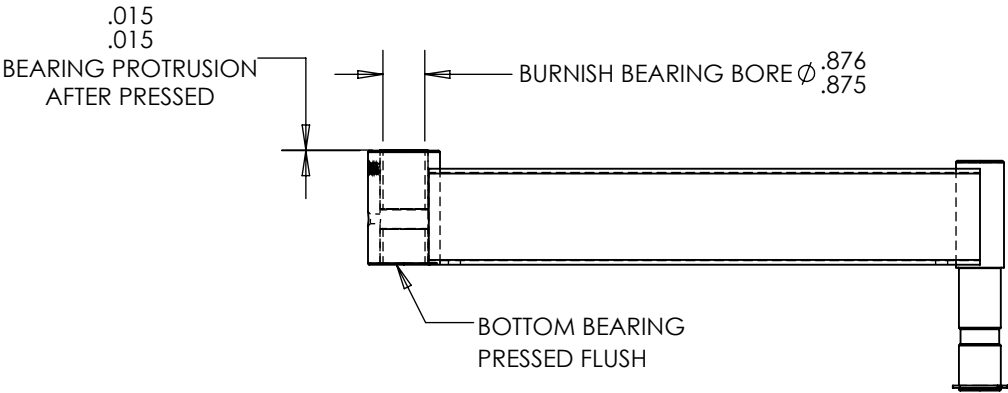
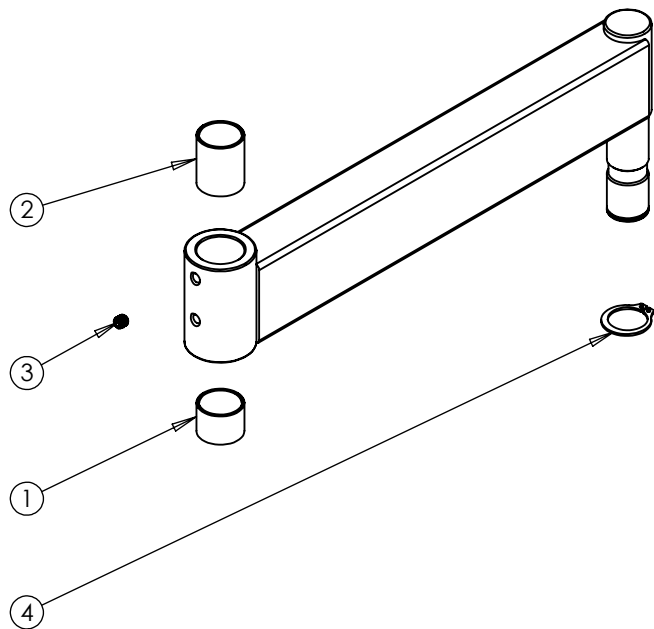


NO	PART#	REV	NAME	QTY.	SHIP W/ KIT
1	016-007-00		OILITE PLUS BEARING, .875 ID x 1.0 OD x 0.75	1	
2	016-008-00		OILITE PLUS BEARING, .875 ID x 1.0 OD x 1.25	1	
3	007-036-00		SHSS 1/4-28 x 1/4, BLACK OXIDE	1	
4	010-012-00		EXTERNAL RETAINING RING, 7/8" SHAFT	1	X

REVISIONS			
REV.	DESCRIPTION	DATE	APPROVED
1	1/4-20 LEVER LOCK STANDARD	05/19/15	STRO
AA	Part# and Revision Change	1/6/2025	DMS

ASSEMBLY NOTES:

- INSERT SET SCREW (3) BUT DO NOT TIGHTEN AGAINST BEARING



DECTRON LLC www.dectronusa.com		TOLERANCE STANDARDS .x ±.025 .xx ±.010 .xxx ±.005	PART 70-1012-00	REV AA
<small>PROPRIETARY & CONFIDENTIAL</small> <small>THE INFORMATION CONTAINED IN THIS DRAWING IS THE SOLE PROPERTY OF DECTRON LLC. ANY REPRODUCTION IN PART OR AS A WHOLE WITHOUT THE WRITTEN PERMISSION OF DECTRON LLC IS PROHIBITED.</small>		ANGULAR ±2°	TITLE 12in RIGID SECTION	
SIZE A	DO NOT SCALE DRAWING CHASE 05.07.25		MATL STEEL	
			FINISH BLACK	