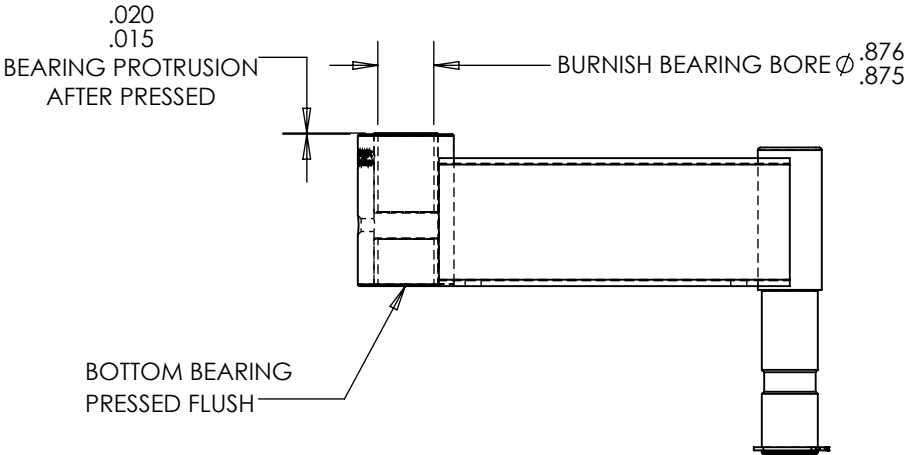
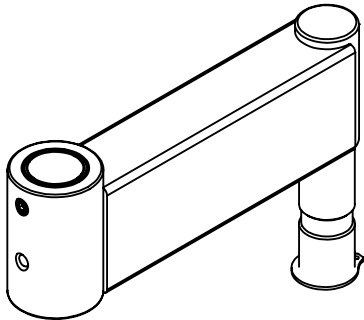
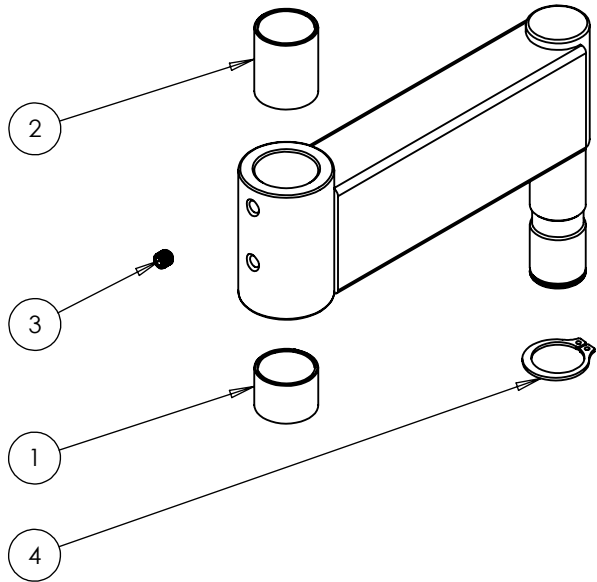


NO	PART#	REV	NAME	QTY.	SHIP W/ KIT
1	016-007-00		OILITE PLUS BEARING, .875 ID x 1.0 OD x 0.75	1	
2	016-008-00		OILITE PLUS BEARING, .875 ID x 1.0 OD x 1.25	1	
3	007-036-00		SHSS 1/4-28 x 1/4, BLACK OXIDE	1	
4	010-012-00		EXTERNAL RETAINING RING, 7/8" SHAFT	1	X

REVISIONS			
REV.	DESCRIPTION	DATE	APPROVED
1	1/4-20 LEVER LOCK STANDARD	05/19/15	STRO
AA	Part# and Revision Change	1/8/2025	DMS

- ASSEMBLY NOTES:
- INSERT SET SCREW (3) BUT DO NOT TIGHTEN AGAINST BEARING



DECTRON LLC www.dectronusa.com		TOLERANCE STANDARDS .x ±.025 .xx ±.010 .xxx ±.005	PART 70-1006-00	REV AA
<small>PROPRIETARY & CONFIDENTIAL THE INFORMATION CONTAINED IN THIS DRAWING IS THE SOLE PROPERTY OF DECTRON LLC. ANY REPRODUCTION IN PART OR AS A WHOLE WITHOUT THE WRITTEN PERMISSION OF DECTRON LLC IS PROHIBITED.</small>		FINISH CARDINAL BLACK TEXTURE POWDER COAT T241-BK59	TITLE 6in RIGID SECTION	MATL STEEL
SIZE A	DO NOT SCALE DRAWING CHASE 05.12.25	ANGULAR ±2°		